

THE ELIZABETH

Three Bedroom
Family Room/Den
Four and a Half Bathrooms

3,391 sf (*Includes 631 sf Lower level*)
plus 511 sf Outdoor Terrace
plus 397 sf Backyard

TOTAL 4,299 sf



EMPRESS PARK

Luxury Towns on Bayview

EMPRESSPARK.CA

Vanities on either side with quartz countertop and return†

Private water closet†

Chandelier (upgrade)

Tons of natural light (corner unit condition)



Spacious Master Ensuite

Applied molding around the perimeter with chair rail

Free standing soaker tub

Tile mosaic insert detail (upgrade)

In-floor heating

Rendering is an artist's impression.



Custom designed kitchen cabinets*

Pendant lighting (upgrade)

Quartz backsplash* to full height to match countertop (upgrade)

Coffered waffle ceiling (upgrade)

LED under cabinet lighting

Expansive island with bank of drawers, dishwasher, wine fridge and breakfast counter

Quartz countertop* for kitchen and island

Gourmet Kitchen with Integrated Appliances

Rendering is an artist's impression.

* As per vendor's standard selections † As per plan

Stunning Living Room

Applied molding on 10 ft high smooth ceilings for the living room

Full height applied molding walls in living room

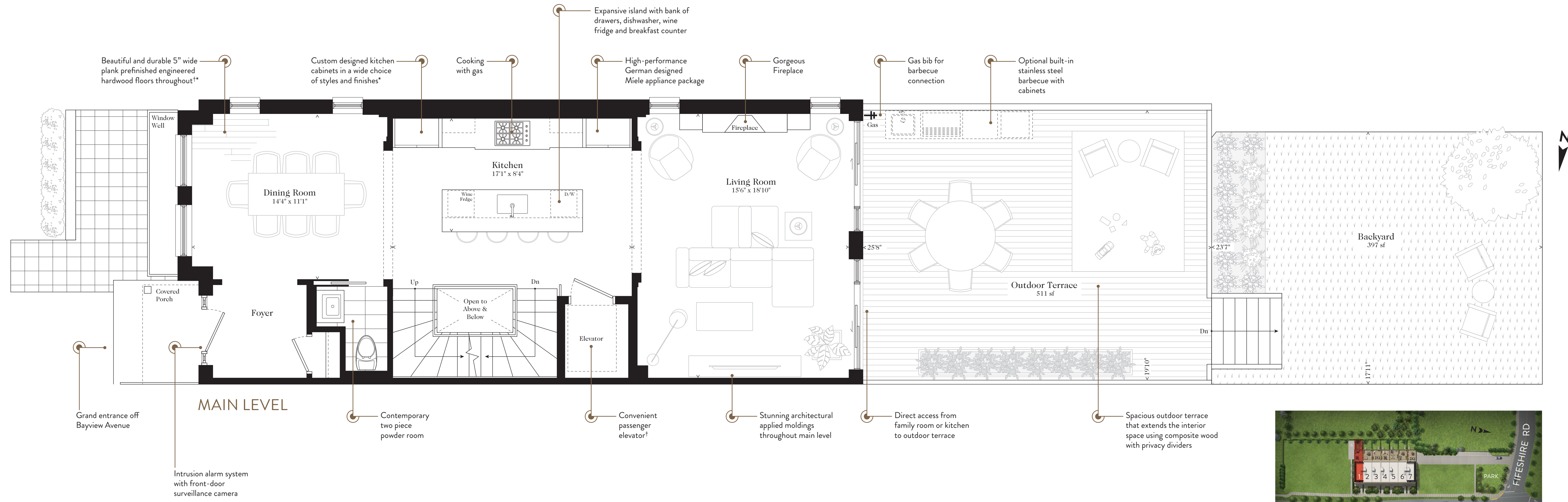
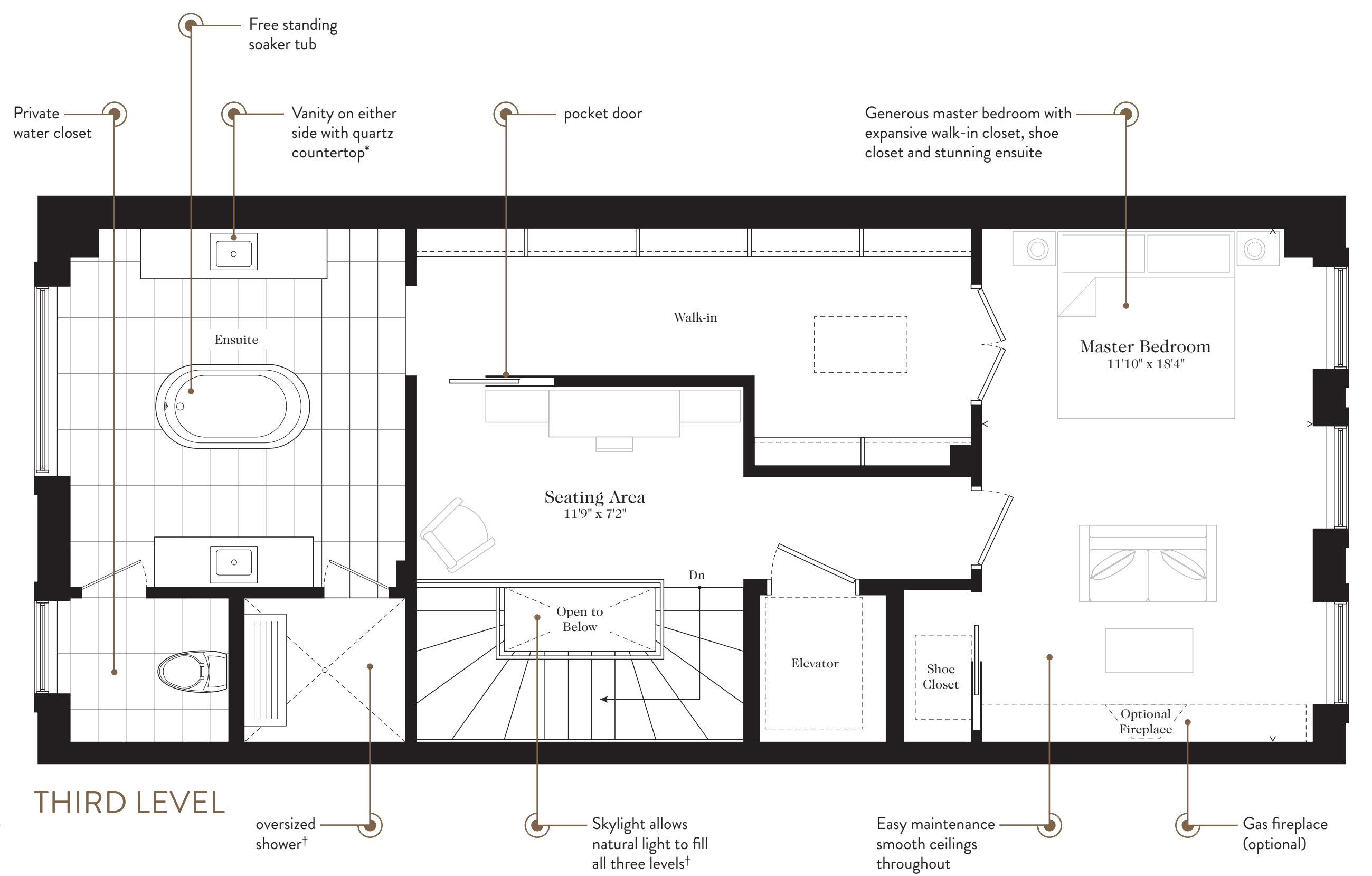
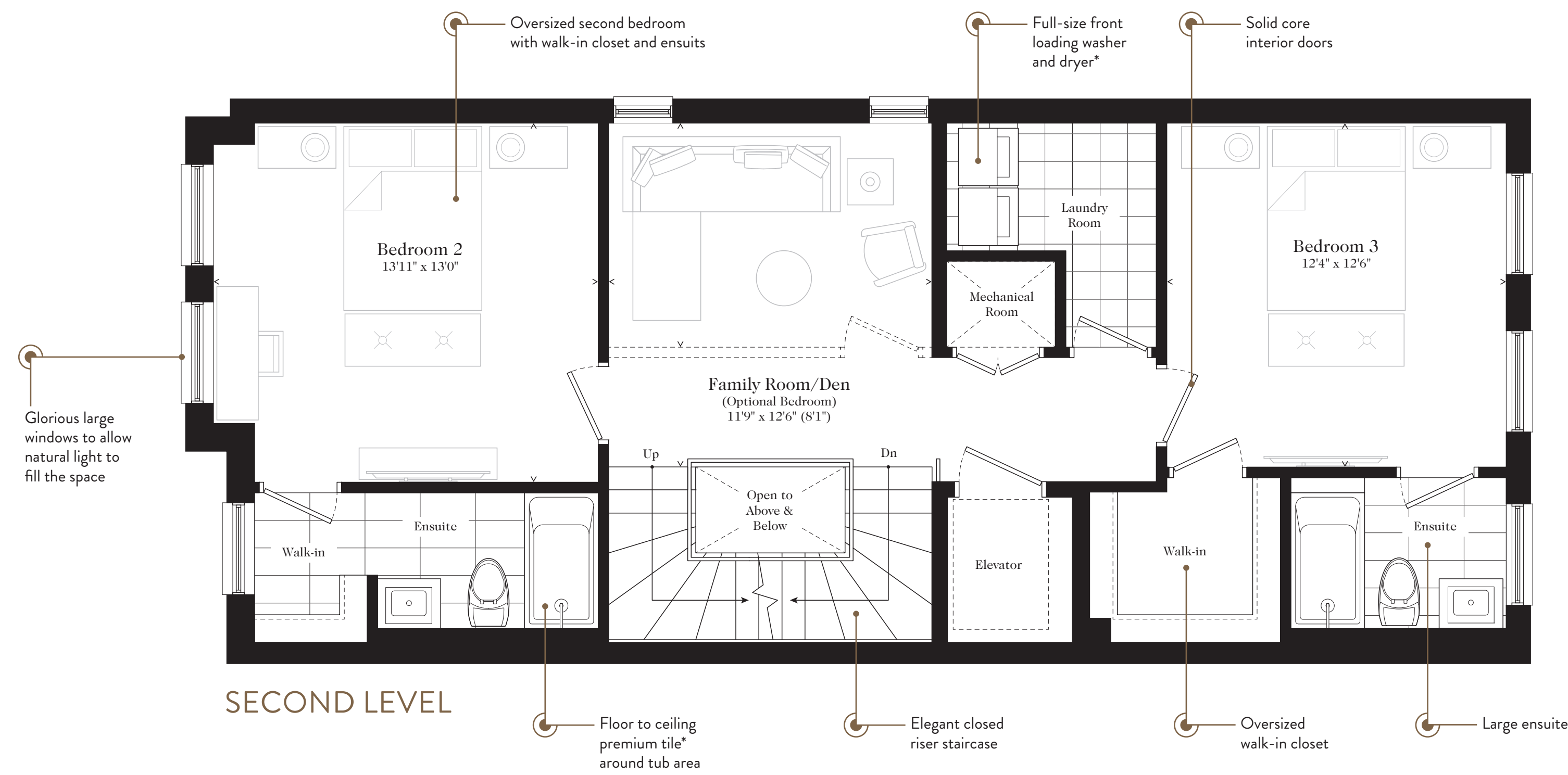
Custom millwork on either side of fireplace

THE ELIZABETH

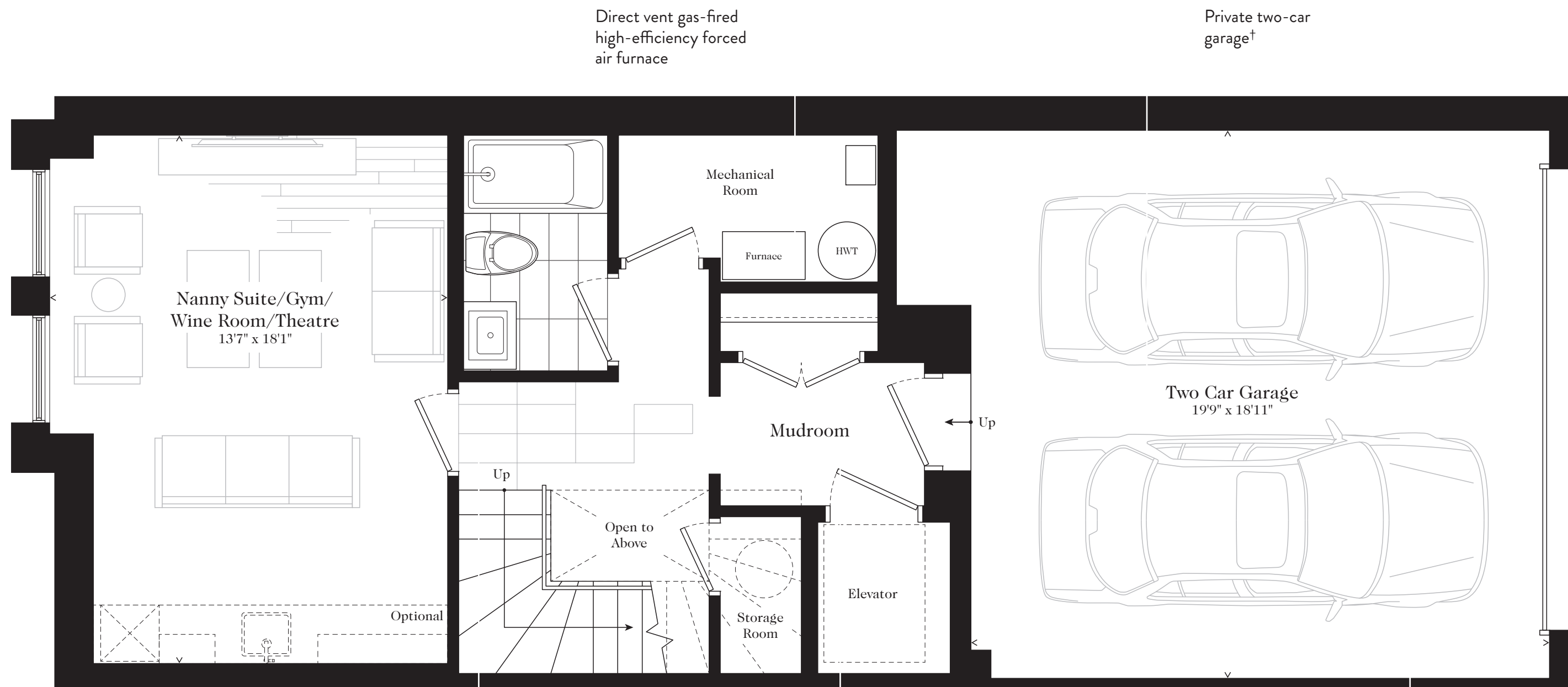
Three Bedroom | Family Room/Den | Four and a Half Bathrooms

3,391 sf (Includes 631 sf Lower level) plus 511 sf Outdoor Terrace plus 397 sf Backyard

TOTAL 4,299 sf



* As per vendor's standard selections † As per plan Number of risers may vary. Materials, specifications and floor plans are subject to change without notice. Renderings and illustrations are an artist's impression. All furniture, planters and shrubs shown on marketing plans are not included. All floor plans are approximate dimensions. Actual useable floor space may vary from the stated floor area. E.S.O.E.



12" x 24" porcelain tile†*

Large multi-purpose mudroom to store shoes, coats, backpacks, hats and sports equipment

Two exterior hose bibs, one at rear and one in garage complete with interior shut-off valves